

Meteorology of Critical Infrastructure

Dr. Alois J. Sieber

One need only think of the weather,
in which case the prediction
even for a few days ahead
is impossible.

Albert Einstein; 1937

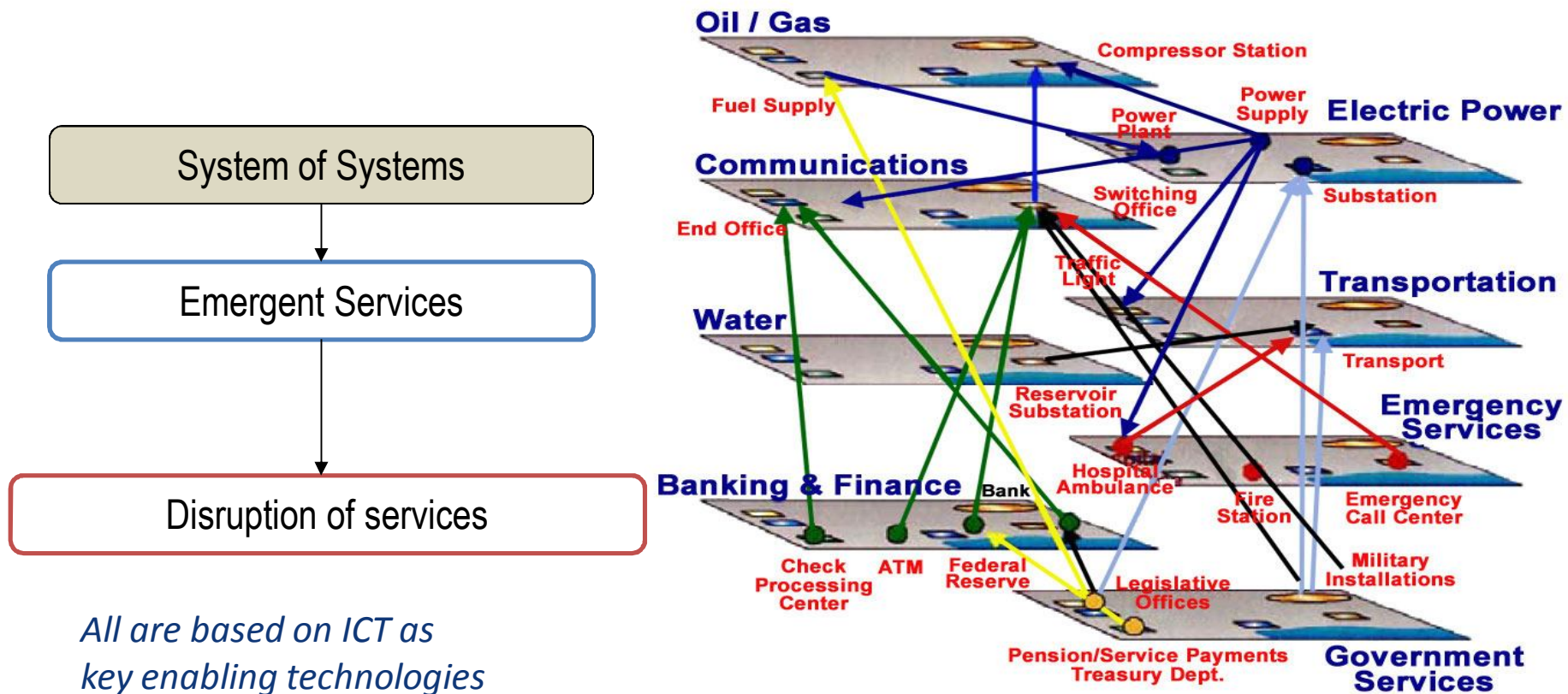
Definition

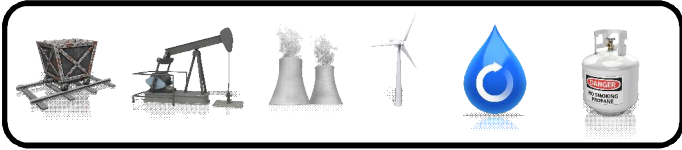
- Critical Infrastructure (CI)

*..... an **asset**, system or part thereof essential for the maintenance of vital societal functions, health, safety, security, economic or social well-being, and the destruction or disruption of which would have a significant impact in a Member State as a result of the failure to maintain those functions*

Directive 2008/114/EC

Interdependencies of Critical Infrastructure

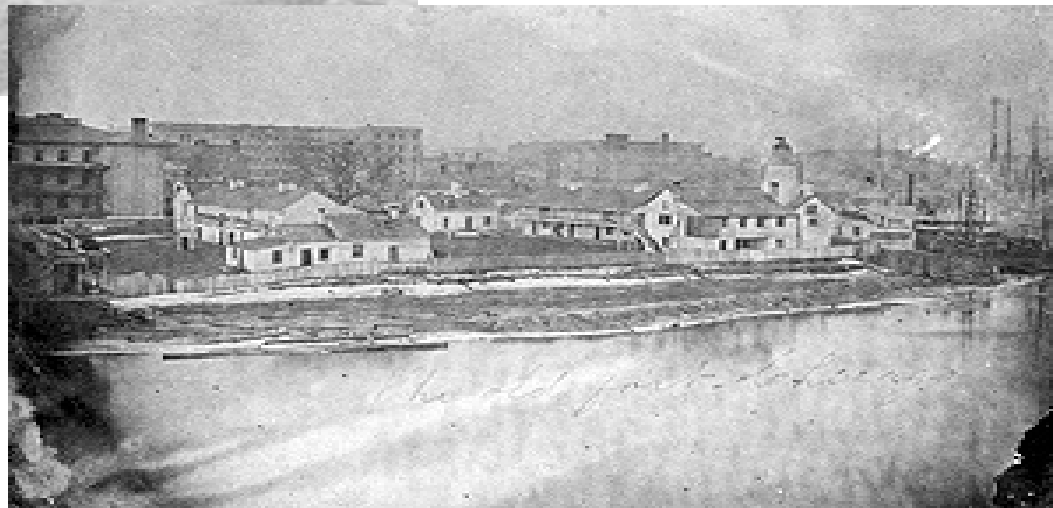






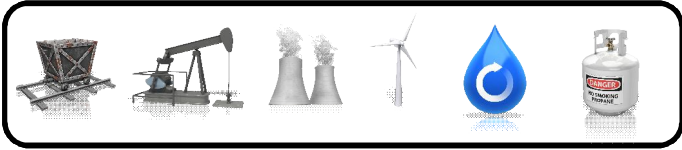
Chicago

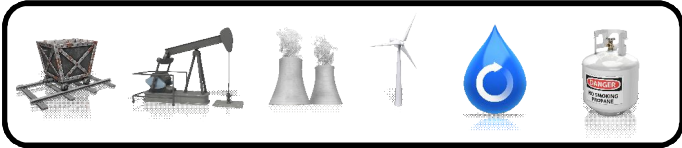
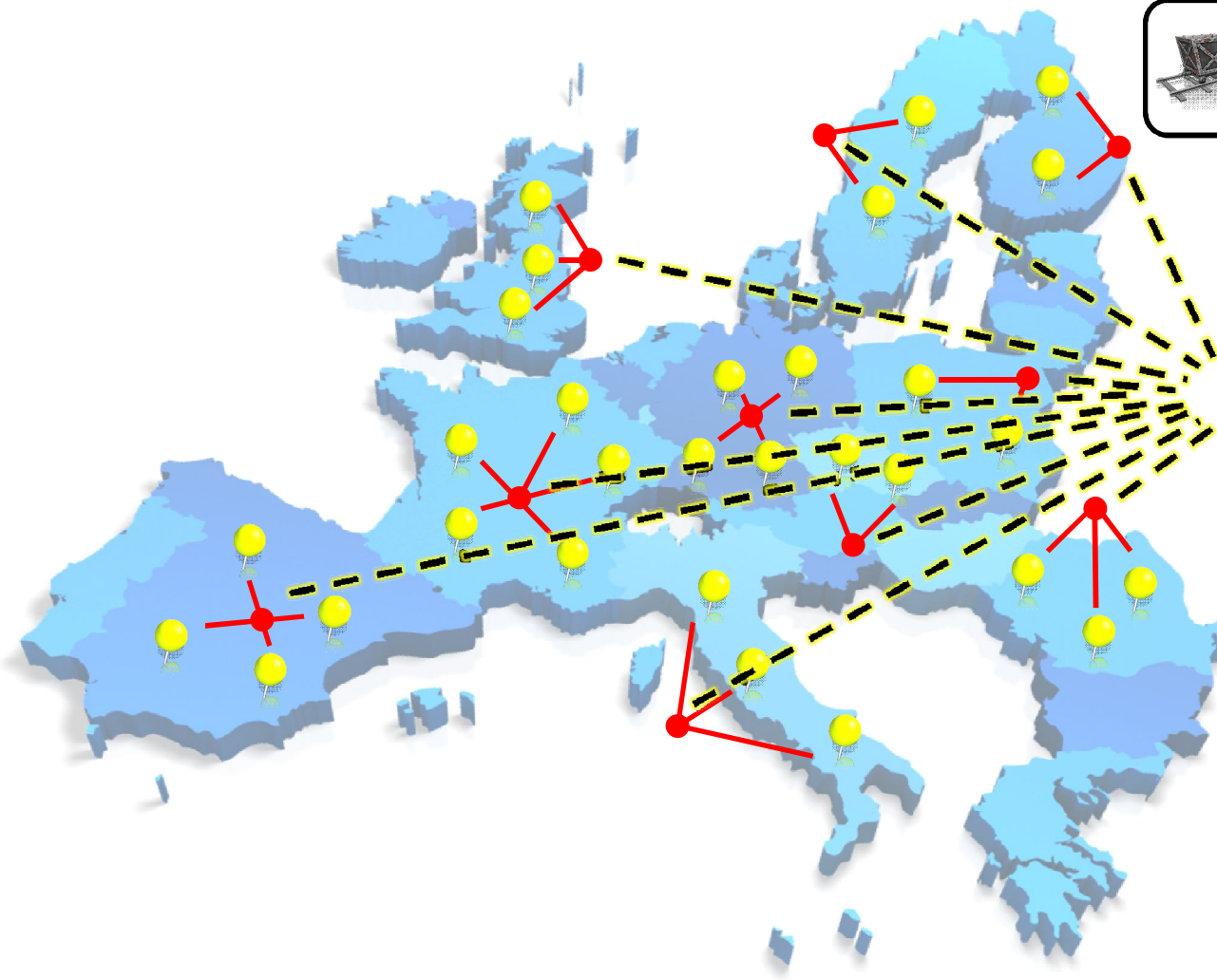
1850



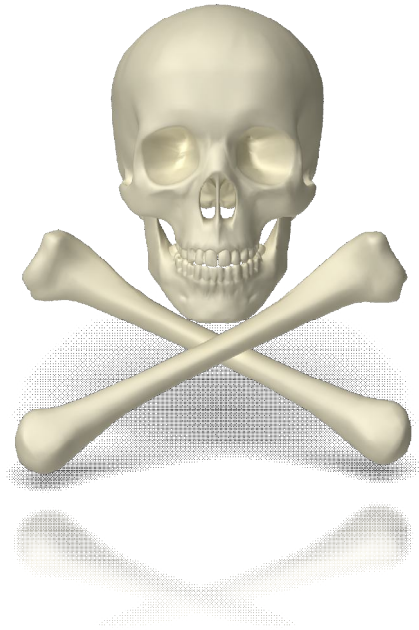


1910

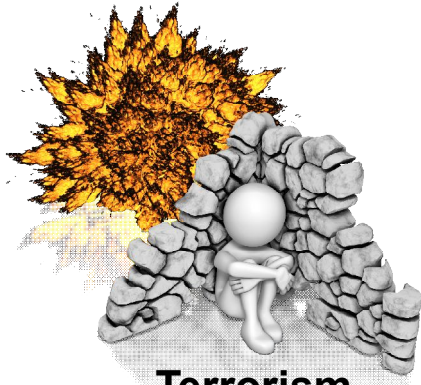




entsoe
Reliable Sustainable Connected



Growing Complexity



Terrorism



Natural Hazards



Human failure



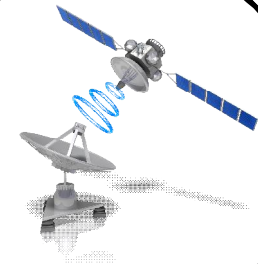
Cyber attacks

To be continued...

NATECH accidents



Extreme space weather





Floods, Czech Republic, 2002

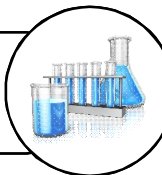


Earthquake, China, 2008



Hurricane, USA, 2005

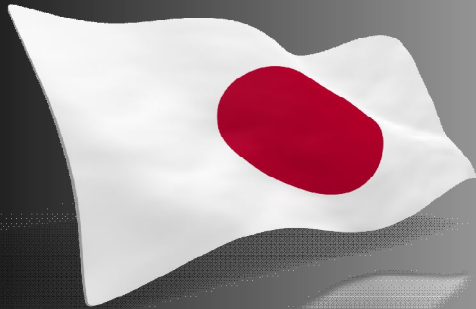
NATECH accidents



Chemical Accident

caused by

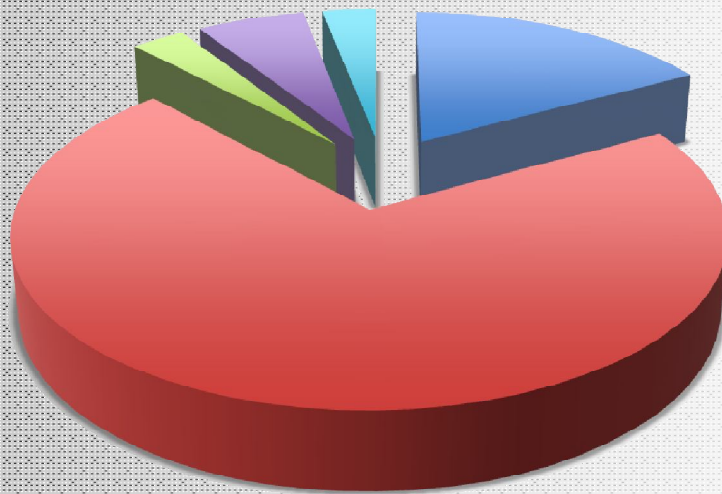
natural hazard or disaster



NATECH accidents



Downtime of analyzed facilities



■ > 1 week / ≤ 1 month

■ > 1 month / ≤ 6 months

■ > 6 months / ≤ 1 year

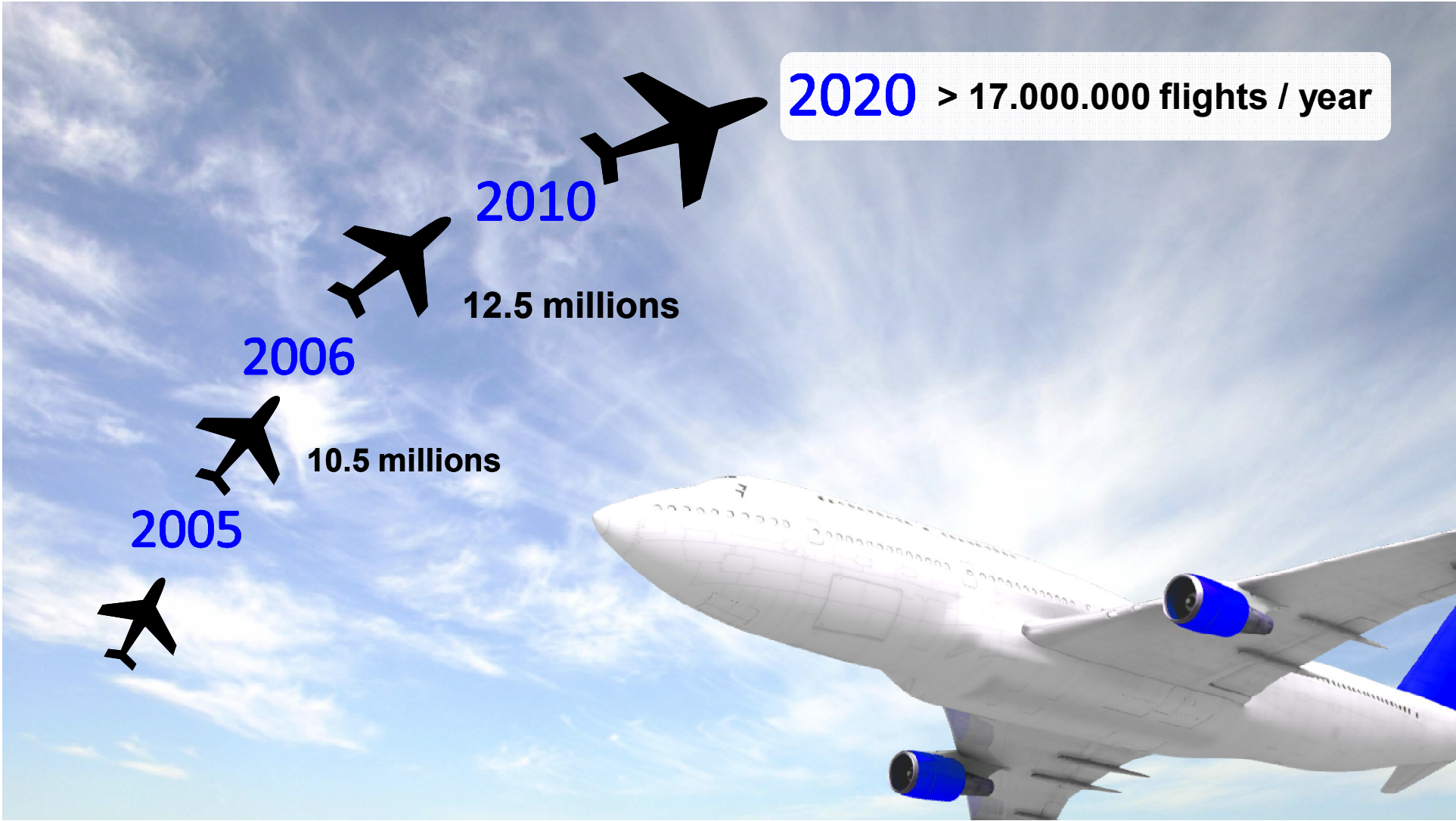
■ > 1 year

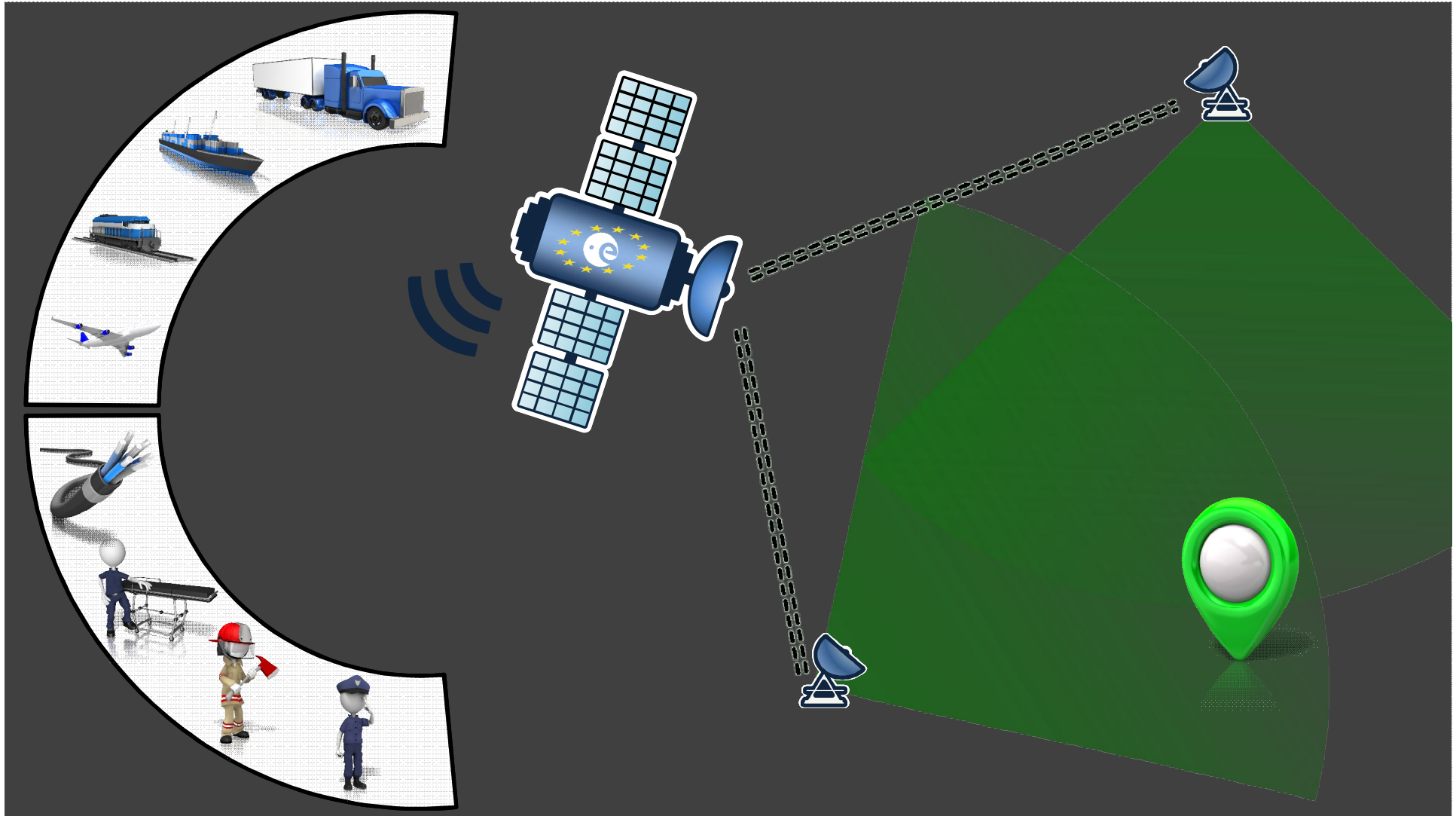
■ unknown



Smart X

Transport
City
Grid
Home
...



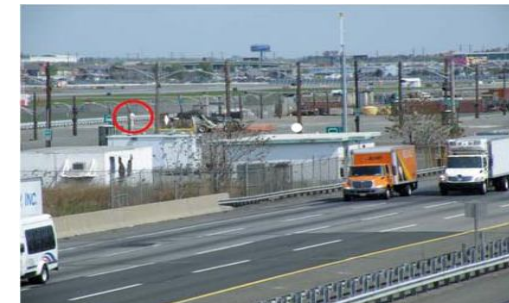


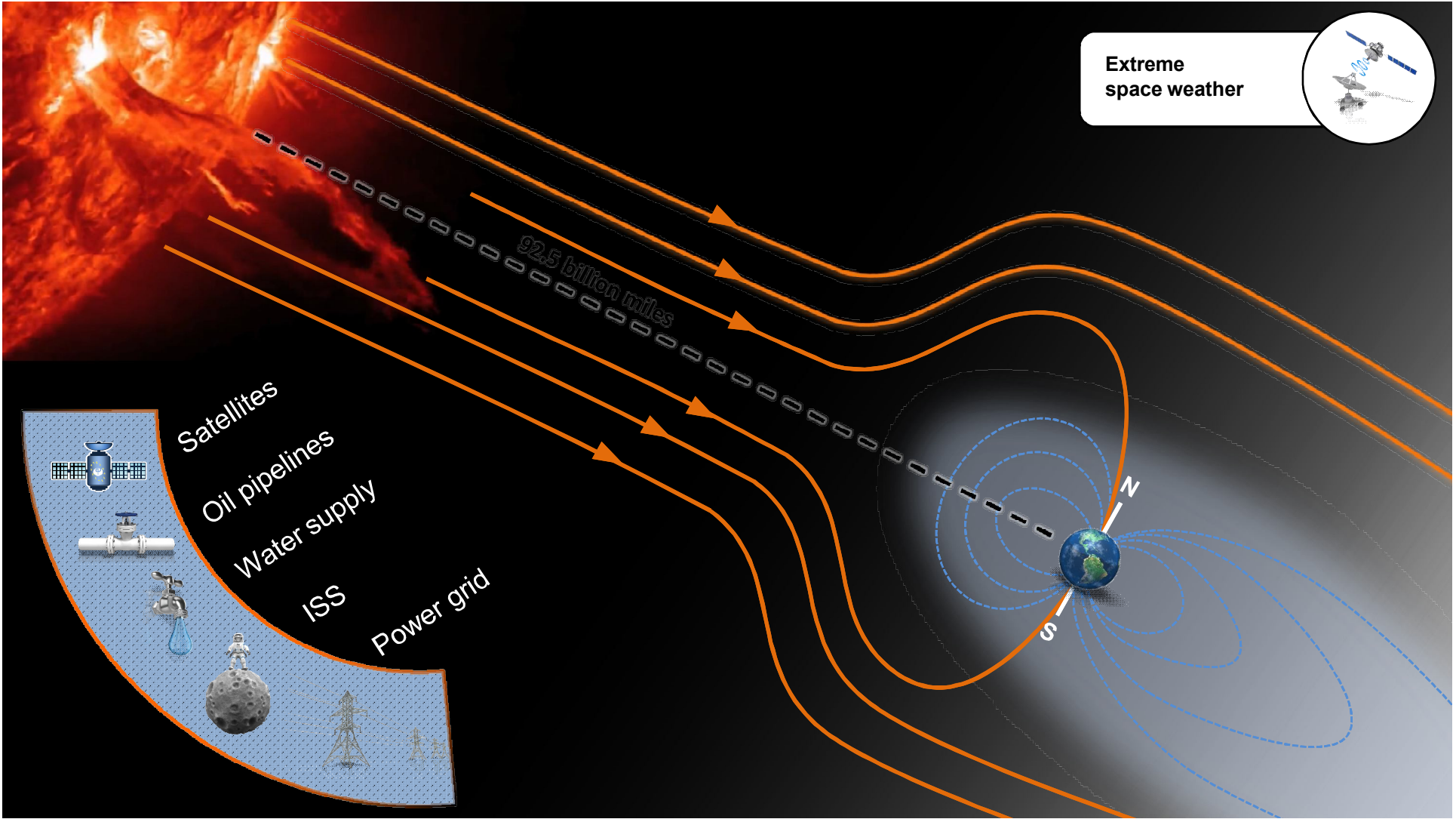
JAMMERS



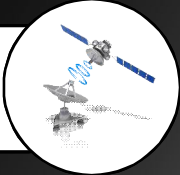
JAMMING: Three Examples

- San Diego – January 2007
 - US Navy ships doing communications jamming tests
 - Their own GPS stopped working
 - Jammed the whole San Diego harbour region
 - Stopped phone systems, cell-phones, hospital paging
 - It took NAVCEN 3 days to finger the culprits!
 - GPS jamming was unintentional
- UK – 2009
 - General Lighthouse Authority jamming trials
 - showed that GPS receivers may visit “exotic locations”
- Newark Airport 2010
 - A GPS jammer in a truck interfered severely
 - a GPS-based aircraft landing system. The FAA needed
 - four months to identify the source of the jamming
 - attack





Extreme space weather



92.5 billion miles

- Satellites
- Oil pipelines
- Water supply
- ISS
- Power grid

Recommendations (*based on ESRIF*)

CIP requests on

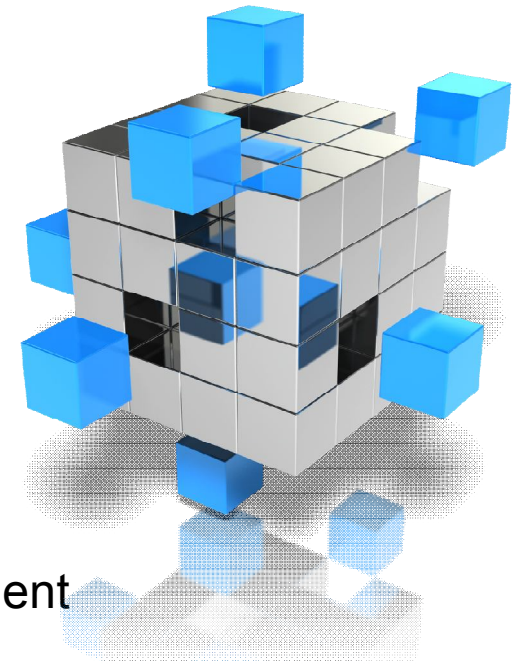
Local
Regional
National
European

level

Common risk assessment

Requests Standards for

Prevention
Protection
Disaster Management



Risk Assessment

***Risk = (probability of the accident occurring) x
(expected loss in case of accident)***

Passau & Burghausen



Passau (Donau)

June 3, 2013

Water level at 12.89 m
2nd highest in recording



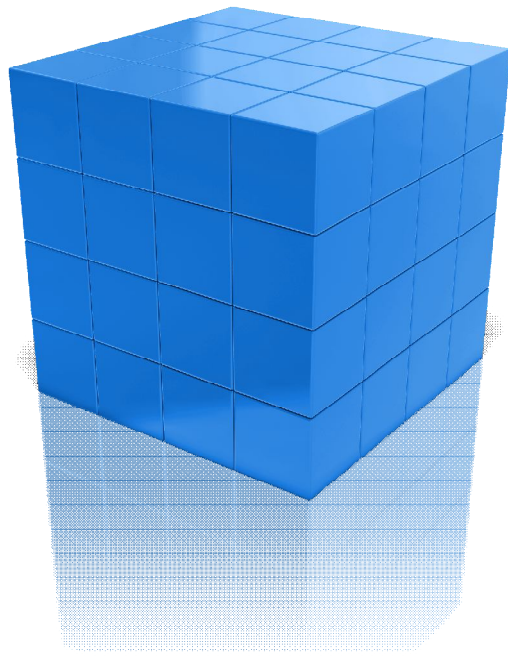
Burghausen (Salzach)

between 1961 and 1971
Construction of
a water protection wall



Burghausen (Salzach)

Risk mitigation based
on meaningful risk assessment?



Exchange between Stakeholders



Realistic Threat Scenarios



CIP – Key Factors

Protection - address hazards and threats
(natural, intentional, unintentional)

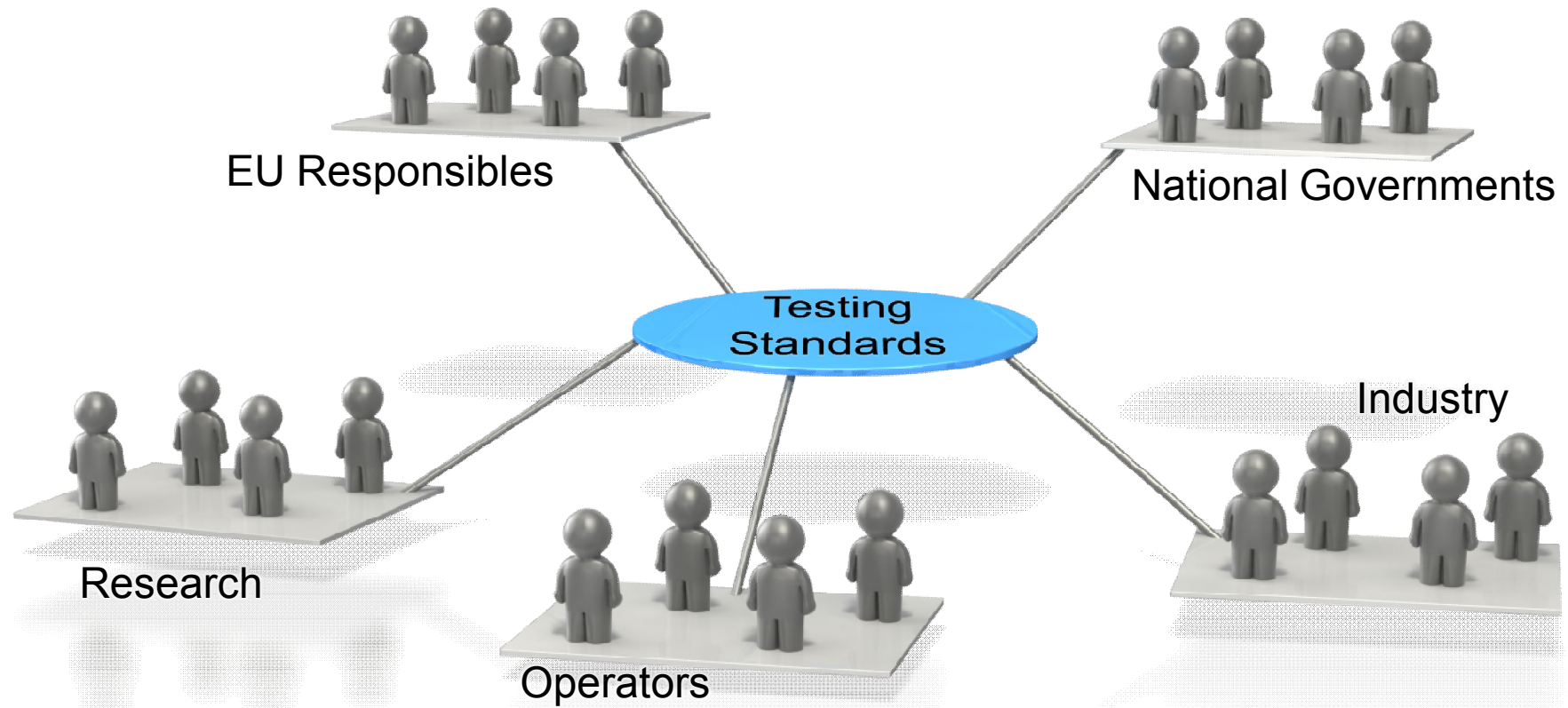
Resilience - preserve societal functions

Private public partnerships (PPP)

Risk assessment/management (security & safety)

All hazards approach

Verification – effectiveness?



World Economic Forum

Published in 2014 a study on ten Risks of Highest Concern in 2014

- Fiscal crises in key economies
- Structurally high unemployment/underemployment
- Water crises
- Severe income disparity
- Failure of climate change mitigation and adaptation
- Greater incidence of extreme weather events (e.g. floods, storms, fires)
- Global governance failure
- Food crises
- Failure of a major financial mechanism/institution
- Profound political and social instability

How to tackle these risks?

- Trust between stakeholders
- Long-term thinking
- Collaborative multistakeholder action
- Global governance



Děkuji!